

ANDREAS L



ANDREAS L HAS BEEN DESIGNED AND BUILT BY TWO OF THE TOP NAMES IN THE SUPERYACHT WORLD. GUESTS FEEL SECURE IN THE KNOWLEDGE THEY ARE ABOARD ONE OF THE WORLD'S MOST SUCCESSFUL SUPERYACHTS, WHOSE SPACIOUS, CONTEMPORARY INTERIOR AND CLEAN LINES ARE COMPLEMENTED BY PROVEN TECHNOLOGY.

Redman Whiteley Dixon and Benetti are the luxury brands that have produced the platform from which to enjoy time with family and friends or impress somebody special. Andreas L has been described as the "Ferrari of the Sea" - but without the noise!

Andreas L has fifteen professional crew dedicated to the party of twelve's pleasure, whether discreetly serving up an exotic dish for lunch on the aft deck or giving a soothing evening massage in the treatment room - perhaps after working up an appetite in the sun deck gym or playing with the finest collections of water toys on the market today.

A master, VIP, two doubles and two twins cocoon guests in their private space, each suite finished in the finest natural materials and colours, offering a good view at anchor and top audio-visual entertainment and communications systems.

The illuminated Jacuzzi, surrounded by an endless supply of fluffy towels, is one of many spots where bon viveurs aboard Andreas L can come together, cocktails to hand, before retiring for the night. One more day lived to the full.







AN EVOLUTION IN DESIGN, INSIDE AND OUT

SPECIFICATION

LOA
60m

BEAM
10.4m

BUILDER
Benetti

INTERIOR DESIGNER
Redman Whiteley Dixon

NAVAL ARCHITECT
Benetti

ENGINES
2 Caterpillar 3512B DITA 1380kw@1600hp

CRUISING SPEED
16 Knots

CLASSIFICATION AND REGISTRATION
Lloyd's Register / MCA

CREW
15/16

GUESTS
12

- DECK AREAS
- SALOONS & DINING
- GUEST CABINS
- CREW AREAS
- BRIDGE

TENDERS & WATERSPORTS

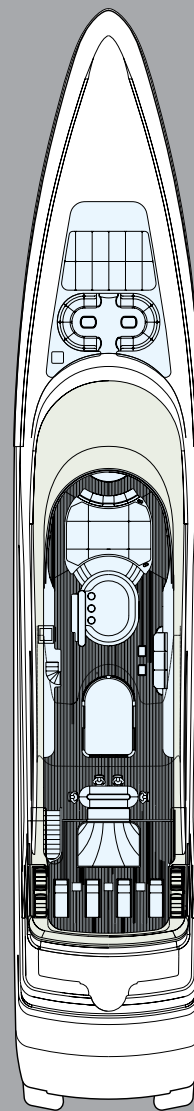
- 1 - 32ft Intrepid tender with 2 x 250hp outboards and ski pole
 - 1 - 23ft Novurania Tender with 2 x 90hp outboards and ski pole
 - 1 - Multi Rider 6 Man Towable Jobe
 - 2 - Malibu Kayaks (Ocean Kayak)
 - 1 - Laser Pico Sport
 - 1 - Laser
 - 1 - Hobie 15ft sailing catamaran
 - 2 - Lifting Bags
 - 1 - Rowing Machine Concept II
 - 1 - Single ski Connolly
 - 3 - Wakeboard Jobe
 - 1 - Jet Ski - Yamaha FZS 4 stroke
 - 1 - Jet Ski - Lifting cradle
 - 1 - Towable Kawasaki Jet Ski
 - 2 - Stand up Paddle boards JP
 - 1 - Beach cricket Grey-Nichols
 - 1 - Beach volleyball
 - 3 - R/C Sailing yachts Laser (toys)
 - 1 - Fender pump pro stock 220v
 - 1 - BBQ Broil-mate
 - 1 - Wake skate
 - 3 - Sets of water skis
 - 2 - Sets of dive gear
 - 1 - Water trampoline with attachments
 - 1 - Inflatable Iceberg
 - 1 - Inflatable slide
 - 1 - Fishing equipment Shimano
- Various Masks/ snorkels and fins
Assortment of wetsuits
Assortment of PFD's (jackets for Jet Ski/ski)

AUDIOVISUAL SYSTEMS & COMMUNICATIONS

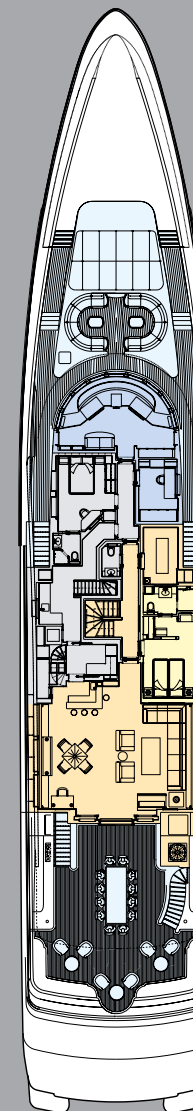
Latest audio visual entertainment and communication systems

SPECIAL FEATURES

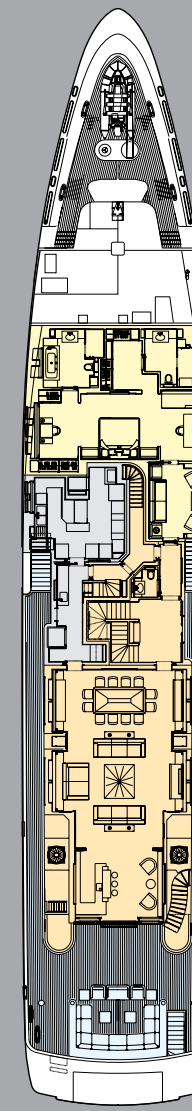
Stabilization at anchor, gymnasium and massage room



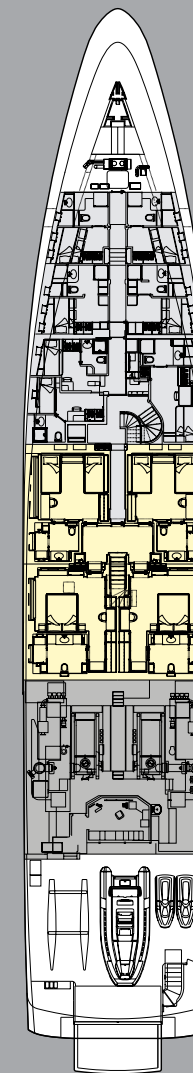
SUN DECK



BRIDGE DECK



MAIN DECK



LOWER DECK



ANDREAS I